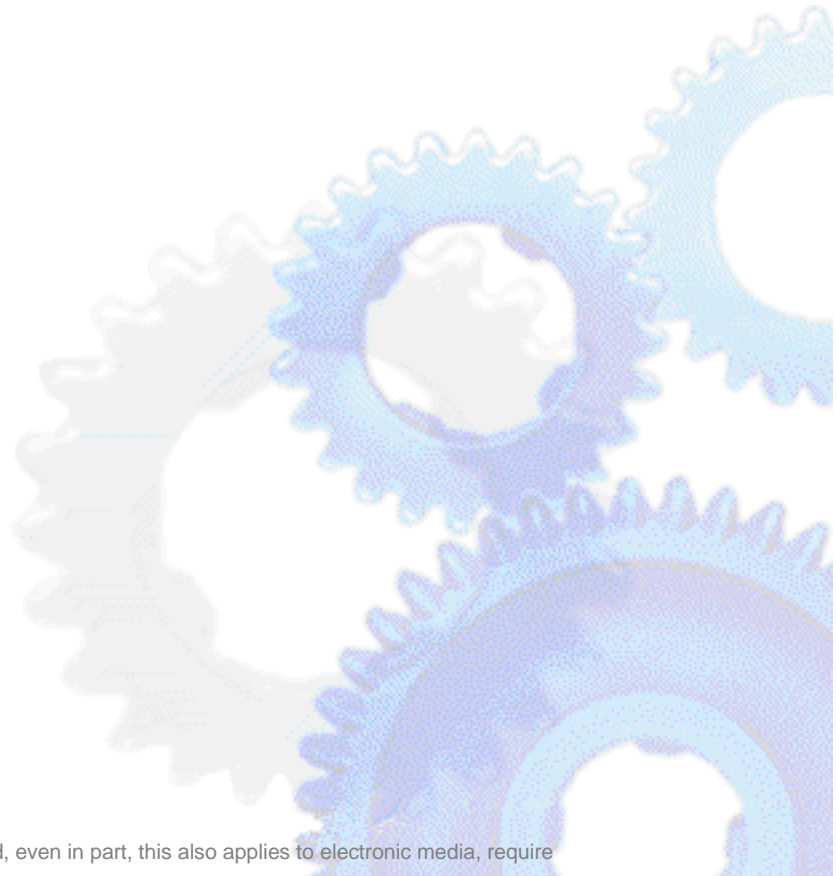


PCSAG Protector FAQ

Version 2.3



PCS AG
support@pcs-ag.de
Version 2.0
Copyright by PCS AG

Reproduction and copying of any kind, even in part, this also applies to electronic media, require the explicit approval of PCS AG.

Contents

| | |
|----------------------------------|---|
| PCSAG Protector FAQ | 1 |
| Contents | 2 |
| Installation..... | 3 |
| Remove Previous Version | 3 |
| Change Scan Direction Mode | 3 |
| Problems..... | 5 |
| Filter will not work | 5 |

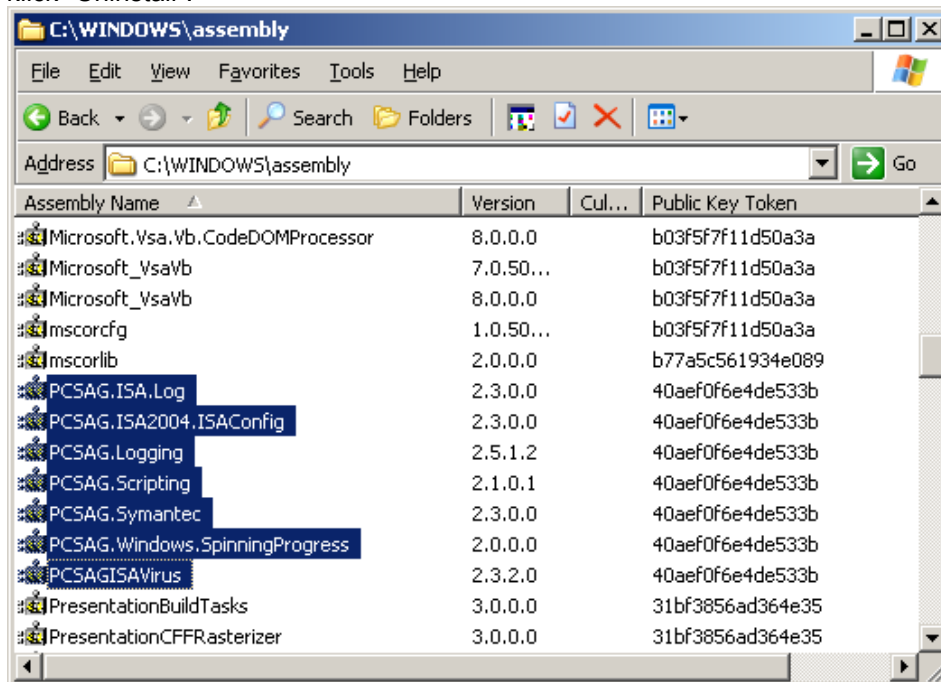


Installation

Remove Previous Version

The System stores Global Access Files into the Microsoft .NET Framework Global Assembly Store. Please remove after an deinstallation, these files also.

Goto Folder: %windir%\assembly and delete all files that starts with "pcsag*", by marking and right kilck "Uninstall".



Change Scan Direction Mode

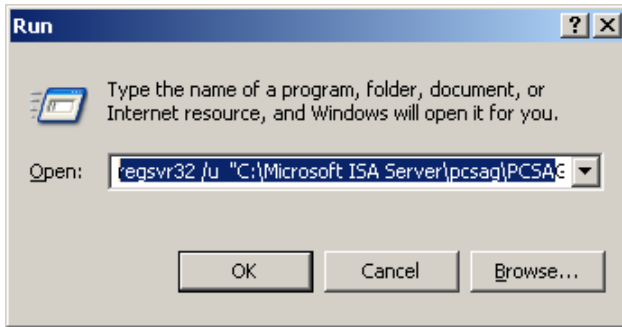
The PCSAG Protector support 3 direction scanning modes.

1. Scan all Outgoing Content
2. Scan all Incoming Content
3. Scan all Outgoing and Incoming Content

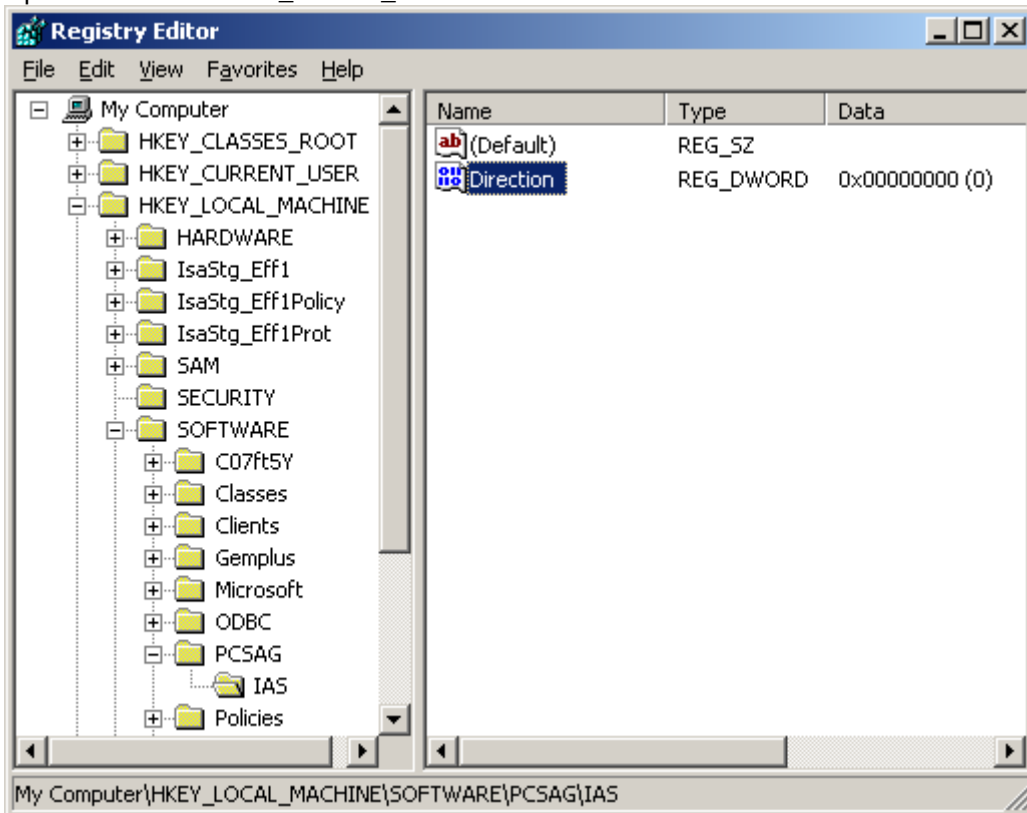
By default the mode is set to scan only the outgoing content.

If you want to change the mode, please use the following instructions.

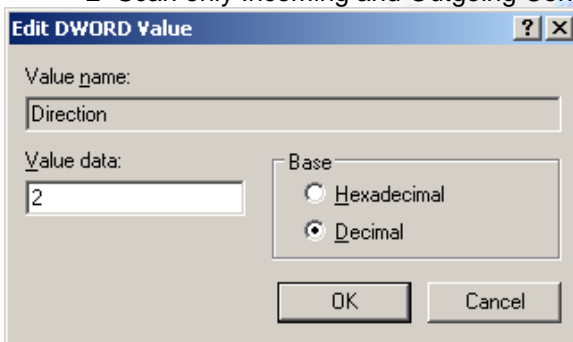
1. Run command "**regsvr32 /U "C:\Microsoft ISA Server\PCSAG\PCSAGHTTPFilter.dll"**. Please use the Path to your Microsoft ISA Server Installation.



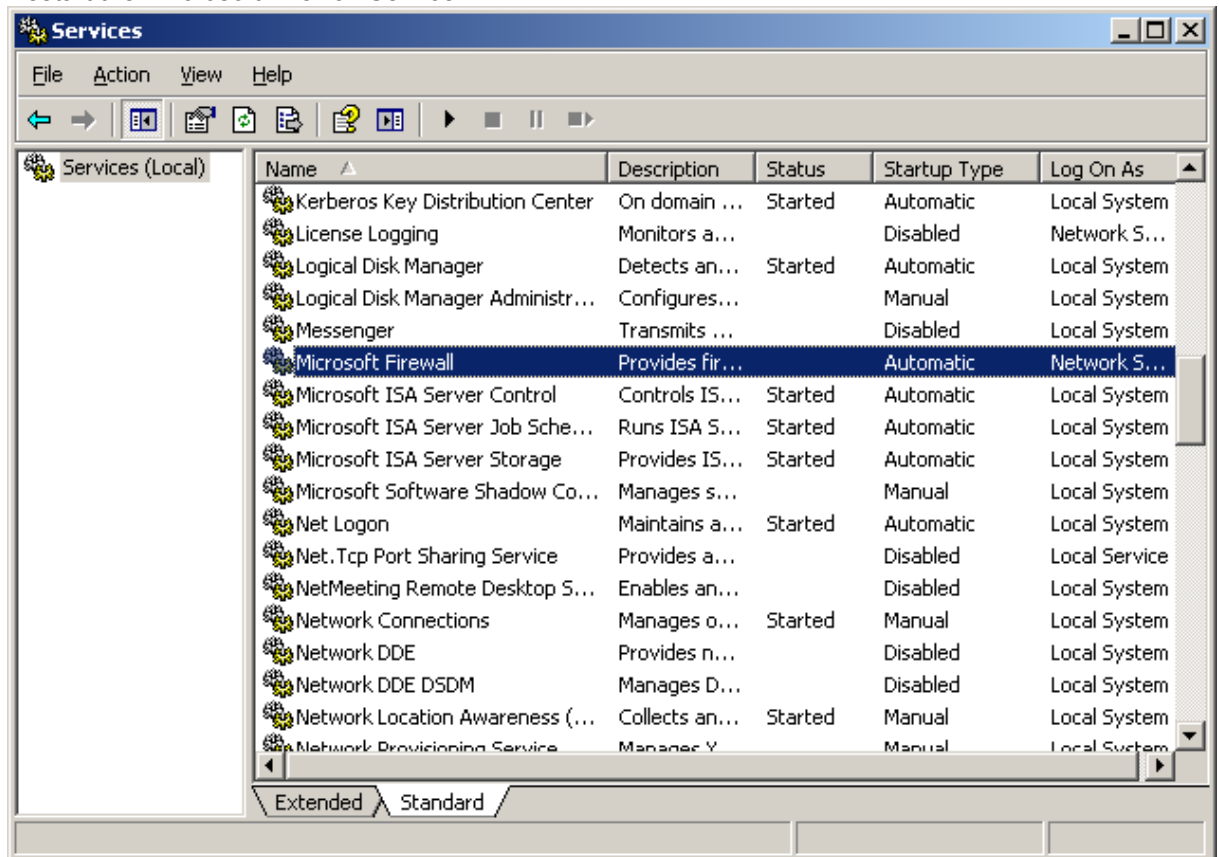
2. Open the Registry by using the command “regedit”
3. Open then Path “HKEY_LOCAL_MACHINE\SOFTWARE\PCSAG\IAS”



4. Change the Value to the 3 possible values, by double click on then item “Direction”:
Value: 0=Scan only Incoming Content
1=Scan only Outgoing Content
2=Scan only Incoming and Outgoing Content



5. Run command “**regsvr32 “C:\Microsoft ISA Server\PCSAG\PCSAGHTTPFilter.dll”**. Please use the Path to your Microsoft ISA Server Installation.
6. Restart the “Microsoft Firewall Service”



Problems

Filter will not work

The most mistake when the Filter will not work or do not log any items is, the User behind the Microsoft Firewall Service is “NetworkServices”. This User has no Access to the hard drive and cannot write to disk. Please change the User to “LocalSystem”

